
RYHU\ 5HFWL

PHQW
1,7

*% (6 +% (6 -% (6 .%)

R /~~VZ~~ \DQJMLH P

(6 \$ %) 7 + 5 8 (6 . %)

<DQJ]KRX <DQJMLH (OHFWURQL



(6 \$ %) 7 + 5 8 (6 . %)

/v•š v š v }μ• &}œÁ œ μœœ v š ~

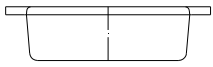
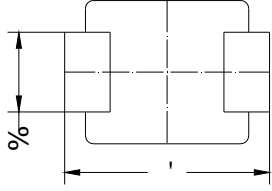
v2 UGHULQJ , QIRUPDSQLHQ

35()5(' 3 1	3\$&.,1* &2'('	81,7 : (, * + 7	0,1,080 3\$&.\$*(SF	,11(5 % 2; 48\$17,7< S	287(5 &\$572 48\$17,7< SF	'(/,9(5< 02'('
(6 \$ %) (6 . %))	\$SSUR[LPDWH				



(6 \$ %) 7 + 5 8 (6 . %)

60%)



'LPHQVLRQV LQ PLOOLPHWHUV

